



A Weekly Update
For The Employees of
North Central Health Care



PHOTO OF THE WEEK



NEWS YOU CAN USE

WEEKLY CONNECTION WITH GARY OLSEN



Teamwork Makes the Difference

Together, we create better outcomes.

At North Central Health Care, teamwork is more than a buzzword—it's a key part of how we care for our clients and support one another every day. From jumping in to help a short-staffed unit, to collaborating across departments, to simply offering encouragement during a tough shift, it's clear that our success depends on all of us working together.

Strong teams are built on trust, communication, and a shared sense of purpose. At NCHC, that sense of purpose shows up in every hallway, every program, and every interaction.

"We know that when we support each other, we're creating a stronger, more resilient organization—and ultimately, better outcomes for those we serve."

This spirit of collaboration ties directly to one of our core values: Accountability—committing to positive outcomes and each other's success. When we step up for one another, we're not only helping our coworkers—we're upholding the standard of excellence our clients and community count on.

Thank you for being team players, problem solvers, and collaborators. Your commitment to each other and to our mission truly makes a difference.

Gary Olsen, Executive Director

Occurrence Reporting Hotline

x4488 or 715.848.4488



Only significant or sentinel events requiring immediate notification to this hotline.

Meet Your L&D Team 2

Welcome NEW Employees! . 3

Sweet Support for MVCC 4

ISO: Fair Volunteers 5

Foodie Forecast 6-7



Colton Edens ABHH

Running faster than
the speed of light in
response to a
Dr. Green!

Shared By: Zoe W.





LEARNING & DEVELOPMENT

Here to help you learn & Grow!



The Learning & Development Team, or L&D for short, is here to support you with **training, onboarding, and professional development**—and we've made it easier that ever to get in touch!

Please send all L&D-related questions, requests, and communications to:

NCHCLearning@norcen.org

Using this shared inbox helps us respond more efficiently and ensures your message gets to the right team member, every time.

MEET YOUR LEARNING & DEVELOPMENT TEAM!

from left to right

Brittany Thomas

HR Coordinator

Danni Grochowski

Learning & Development Specialist

Brandy Jo Thorne

Manager, Learning & Development

Audrey Grove

Learning & Development Specialist

Dan Tait

HR Technology Specialist



WELCOME THESE *New Employees* TO THE TEAM!

These employees joined NCHC in July 2025!

Pine Crest



Amanda Waltemate
Hospitality



Arianna Stiemke
Hospitality



Kyli Schumacher
CNA



Lisa Thorson
Life Enrichment



Lynn Opichka
Life Enrichment



Destini Hendrickson
Hospitality

Communications



Randy Hoffmeyer
Marketing & Comms
Coordinator



Natalia Ortega
Hospitality



Hannah Long
CNA



Allison Jagodzinski
CNA



Lindsey Bryant
CNA



Anthony Giovanoni
Case Manager

Mount View Care Center

CTX - Wausau

Community Treatment - Merrill

CTX - Antigo

Protective Svcs

Crisis



Nicole Rice
Case Manager



Patrick Reavley
Case Manager



Stephanie Young
Employment Specialist



Alexa Zich
Protective Services Rep



Dave Jones
Crisis Tech

We are so excited to have
you on our team!





PHOTO OF THE WEEK

SWEET SUPPORT FOR MVCC

This past Tuesday, Mount View Care Center staff and residents enjoyed a tasty treat for a great cause—banana splits! The special event doubled as a fundraiser, with all proceeds benefiting Life Enrichment programming, which brings meaningful activities, social engagement, and joy to our residents.

Dozens lined up to create their perfect dessert and show their support, turning a simple scoop of ice cream into a delicious way to make a difference.

Thank you to everyone who participated and helped make this fundraiser such a fun and successful event. Your generosity helps us continue creating vibrant experiences for those we serve!



RETIREMENT News!

WISHING ROGENE THE VERY BEST!

Last week, we celebrated the retirement of Rogene Janik, Life Enrichment Aide in Long Term Care, after 7 wonderful years of service. Rogene brought warmth, creativity, and joy to the lives of our residents through her dedication to meaningful engagement and compassionate care. We thank her for the impact she's made at NCHC and wish her all the best in this exciting next chapter!



Your Health, Our Expertise: Tria Health Pharmacists



Tria Health is a free benefit available through your North Central Health Care health insurance.

Tria Health's pharmacists will review your medications, lifestyle, and any preventative services you may need, and create a custom care plan just for you!

Schedule an Appointment

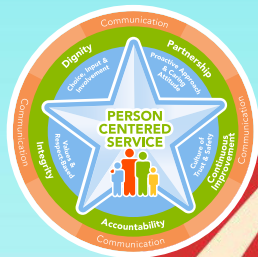
Call 913.322.8456
or Visit triahealth.com/schedule





LET'S GO TO THE FAIR!

Food, Fun, Friends...What More Can You Ask For?



Volunteers Wanted for the Wisconsin Valley Fair in Wausau!

Mount View Care Center will be taking residents to the Fair in August and Volunteer Services is looking for volunteers to assist residents at the outings.

Volunteers will provide our residents with an opportunity to enjoy a wonderful community event. It would be a one-on-one experience where volunteers will push residents in their wheelchairs around the fairgrounds taking in the sights, sounds, and smells. We would provide the transportation to and from the facility.

A \$5 meal stipend will be provided. You can bring additional funds for extras, if you wish.

If you know of anyone that is looking for volunteer hours or a teen or adult group that likes to participate in community service projects, please share this need with them.

This is an event our residents look forward to and we cannot do it without the assistance of volunteers.

- All volunteers must be 13 years of age or older and be able to push a wheelchair.
- You do not have to be a current volunteer. You will just have to sign a confidentiality agreement.
- Each volunteer will receive a ticket into the fair that can be used again later that day.

Mount View Care Center Fair Outing Volunteering

**Still in Need Volunteers for:
Wednesday, July 30th | 9:30am - 3:00pm**

Interested In Helping With This Fun Activity?

Please contact the Volunteer Office at 715.848.4450 or volunteer@nrcen.org. Thank you!



JULY 21 – JULY 25, 2025

	MONDAY	TUESDAY	WEDS	THURSDAY	FRIDAY
MAIN ENTRÉE	Roast Beef Mashed Potatoes Green Beans	Chicken Alfredo Breadsticks Beets	Pork Loin Sweet Potatoes Buttered Peas	Ranch Meatloaf Garlic Pasta Zucchini/Tomatoes	Battered Fish Country Potatoes Coleslaw
SOUP	Veggie Chowder	Potato Soup	Minestrone Soup	Beefy Vegetable Soup	Split Pea Soup
ALT. OPTION	Chef's Choice	Egg Rolls	Chicken Bacon Flatbread	Nachos Supreme	Taco Bar
DESSERT	Cookies	Chocolate Peanut Butter Bar	Chocolate Eclair Torte	Monster Cookies	Blueberry Delight

JULY 28 – AUGUST 1, 2025

	MONDAY	TUESDAY	WEDS	THURSDAY	FRIDAY
MAIN ENTRÉE	Beef Stroganoff Noodles Broccoli	BBQ Ribs Mac & Cheese Glazed Carrots	Beef Liver & Onions Mashed Potatoes Corn	Spaghetti Garlic Toast Green Beans	Country Fried Steak Mashed Potatoes Cabbage
SOUP	Cream of Broccoli Soup	Cream of Potato Soup	Chicken Veggie Soup	Taco Soup	Stuffed Green Pepper Soup
ALT. OPTION	Chef's Choice	Chicken Supreme	BBQ on Bun	Monte Cristo	Tuna Melt
DESSERT	Banana Cream Cheesecake	Ritz Strawberry Dessert	Shirley Temple Poke Cake	Cookies	Strawberry Bavarian Cream

WHAT'S FOR LUNCH?

**WAUSAU CAMPUS
EMPLOYEE
CAFETERIA**
OPEN TO ALL NCHC
& WAUSAU CAMPUS
EMPLOYEES

MONDAY – FRIDAY

Grab-N-Go 8 am – 6:30 pm

Lunch 10 am – 2 pm
Soup, Salad Bar
& Hot Food Bar

Soup Served until 6:30 pm
or until sold out.

WEEKENDS

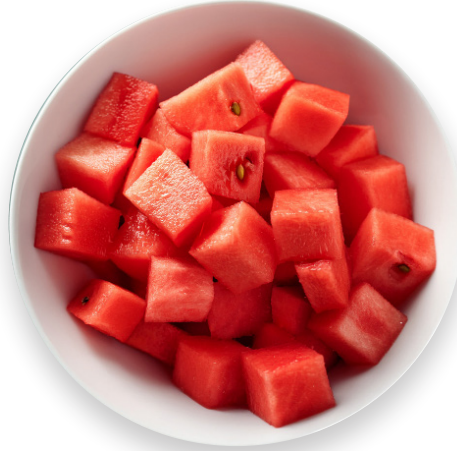
**The Employee Cafeteria
is Closed.**

WEEKDAY SALAD BAR &
HOT FOOD BAR \$.45/OUNCE

Daily Alt. Menu

**FEATURING DAILY SPECIALS
LIKE GRILLED BEEF & CHEDDAR,
CHEESEBURGERS, BBQ, NACHO
BAR, PIZZA & MORE!!**

Make your own cold or hot sandwich
with fixins' OR self-serve
at the salad bar.





THE BISTRO

NOW OPEN 7 DAYS A WEEK! | WEEKDAYS 7:30AM - 3PM | WEEKENDS: 9:30AM - 5PM

THE BISTRO WILL BE CLOSED ON WEEKENDS FROM 1-1:30PM TO ACCOMMODATE STAFF BREAKS

*HOT FOOD IS AVAILABLE AT THE BISTRO DAILY UNTIL 2:30PM *



SPECIAL OF THE WEEK

BLT Panini

DOUBLE BACON | LETTUCE | TOMATO | MAYO

DESSERT OF THE WEEK Root Beer/Orange Floats



BACK FOR THE SEASON!

Ice Cream

ICE CREAM CONE1.50

ICE CREAM SUNDAE2.25



SHARE SOME LOVE WITH BISTRO BUCKS!

